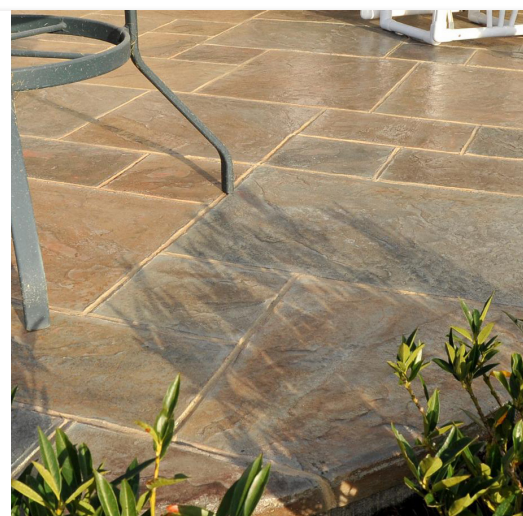




**EUCLID CHEMICAL**

# **INCRETE STAIN-CRETE**

## Acid Stain System



- A COST-EFFECTIVE ALTERNATIVE TO TILE
- EXTERIOR OR INTERIOR APPLICATIONS
- EASY TO MAINTAIN
- UNLIMITED DESIGN POSSIBILITIES
- NINE STANDARD COLORS
- RESIDENTIAL AND COMMERCIAL
- PENETRATING PERMANENT COLOR



**INCRETE STAIN-CRETE**

# NEW LIFE TO OLD CONCRETE FLOORS

TRANSFORM PLAIN CONCRETE INTO SURFACES RICH IN COLOR

Increte Stain-Crete is not a paint cover up, but a reactive stain that penetrates concrete to restore and beautify existing concrete surfaces with distinctive, permanent color. The result is a marbled appearance with translucent highlights that does not chip, fade or peel. With multiple colors and creative design options available, an unlimited palette of possibilities is an affordable alternative to tile. Once sealed, Increte Stain-Crete delivers a protected and low maintenance surface. With total flexibility and endless design freedom, Increte Stain-Crete redefines elegance for venues such as restaurants, hotels, conference centers, dealerships and an array of commercial/retail locations.



Increte Stain-Crete is ideal for any commercial or residential project needing to enhance any theme or decor with rich color. The resulting distinctive, beautifully marbled, translucent effect looks like natural stone. Stain-Crete can be used in conjunction with surfaces that have already been color hardened or integrally colored.



Ideal for: Interior and Exterior Surfaces | Showrooms | Interior Floors

## AN ENGINEERED SYSTEMS APPROACH

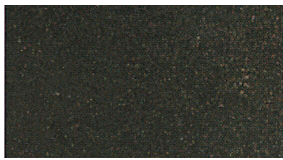
PRODUCT	DESCRIPTION	QUANTITY	COVERAGE
INCRETE STAIN-CRETE	A penetrating acid stain that provides a translucent, subtly-shaded, marbled effect on concrete, similar to the appearance of aged, natural stone.	1 gal (3.8 L)	1,500 ft <sup>2</sup> (139 m <sup>2</sup> )
		5 gal (18.9 L)	7,500 ft <sup>2</sup> (696 m <sup>2</sup> )
INCRETE CLEAR SEAL	A clear, non-yellowing formula that will protect the surface while deepening and highlighting the color of concrete.	1 gal (3.8 L)	200-400 ft <sup>2</sup> (18-37 m <sup>2</sup> )
		5 gal (18.9 L)	1,000-2,000 ft <sup>2</sup> (93-185 m <sup>2</sup> )
INCRETE SHUR-GRIP* <small>*Only for exterior use</small>	A colorless, finely-graded, non-slip additive for sealers.	1 lb (3.8 L)	1,000 ft <sup>2</sup> (93 m <sup>2</sup> )
		15 lb (6.8 kg)	15,000 ft <sup>2</sup> (1,393 m <sup>2</sup> )
INCRETE HIGH GLOSS WAX	Clear, durable wax that resists surface abuse and leaves lustrous finish that can be buffed.	1 gal (3.8 L) Kit	Up to 1,500 ft <sup>2</sup> (139 m <sup>2</sup> )

## ALTERNATIVE COATING OPTIONS

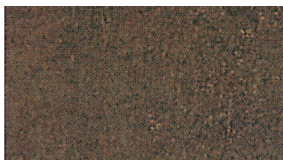
PRODUCT	DESCRIPTION	QUANTITY	COVERAGE
INCRETE URETHANE	A protective top coat for epoxies that prevents yellowing and abrasion. Available in solvent and water-based formulas.	1 gal (3.8 L)	300 ft <sup>2</sup> (89 m <sup>2</sup> )
INCRETE HIGH PERFORMANCE EPOXY	A 100 % solids, high-performance epoxy coating that provides a high-gloss, high-build protection for concrete surfaces.	1 gal (3.8 L)	250 ft <sup>2</sup> (14 m <sup>2</sup> ) @ 10 mils

## COLOR COMBINATIONS

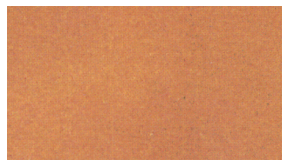
Elegance in nine deep, rich colors



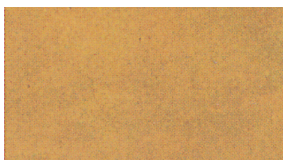
Black



Walnut



Terra Cotta



Bronze\*



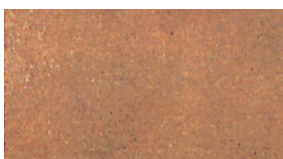
Weathered Copper\*



Lime Green\*



Mission Tan



Rust Brown



Turquoise\*

\*Increte Stain-Crete colors Weathered Copper, Lime Green, Bronze, and Turquoise are for interior applications only. Increte Stain-Crete must be applied on concrete that has cured a minimum of 28 days and is not subject to hydrostatic pressure. Please see technical data sheet for complete information.

NOTE: This printed color chart is for reference purposes. Euclid Chemical recommends choosing colors from actual test samples.



**EUCLID CHEMICAL**

1611 Gunn Highway  
Odessa, FL 33556  
t 1-800-752-4626

[www.euclidchemical.com](http://www.euclidchemical.com)